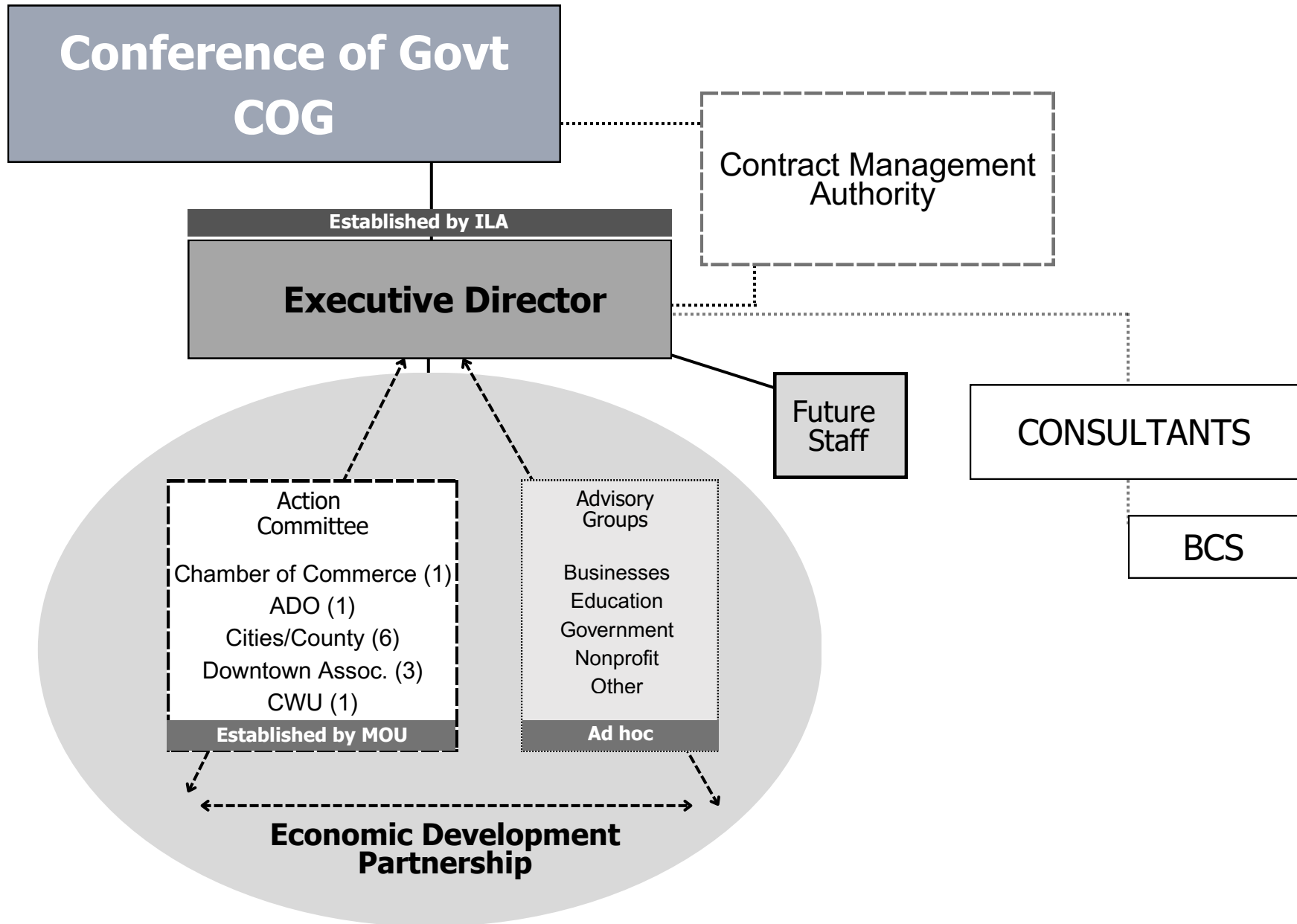


Kittitas County Economic Development

Partnership Framework for Collaboration and Transformative Economic Development



Kittitas County Economic Development

Partnership Framework for Collaboration and Transformative Economic Development

Definition of Economic Development for Kittitas County

Economic development in Kittitas County is the active work and intentional choices we make to foster diverse local businesses, recruit compatible industries, and create pathways to sustainable, living-wage jobs, driven by strategic decisions on community and infrastructure investment. It demands conscious effort to ensure this growth strengthens our quality of life by expanding opportunities and improving housing affordability, while deliberately safeguarding the agricultural roots, rural & historic character, and natural beauty unique to Kittitas County.

Roles

The **Conference of Governments (COG)** is charged with oversight, accountability, and resourcing of the KCEDP. Facilitates the establishment of the partnership via interlocal agreement. Provides guidance, oversight and support to the partnership. Hires and supervises the staff. Appoints membership to the KCEDP. Contracts with external support as needed to successfully implement the mission/vision of the partnership.

The **Executive Director (ED)** will be directly hired and supervised by COG but will have a collaborative relationship both with the KCEDP and external support partners. Staff will be responsible for ensuring the coordination and follow through of the committee and will report regularly to COG on implementation progress. Additional responsibilities that support the mission/vision of the partnership may be directly assigned by COG.

Consultants: As needed, the KCEDP, Staff and/or COG may identify external stakeholders who can bring additional value, resources, and expertise to the partnership. These external support partners will contract directly with COG but will report to the Economic Development Director and work with KCEDP to accomplish their scope of work.

The **Kittitas County Economic Development Partnership (KCEDP)** is a group comprised of “doers” who will leverage their subject matter expertise to collaborate and conduct the work necessary to achieve the mission/vision of the partnership, using a collaborative action model. It consists of two working teams, the Action Committee and an Advisory Group:

Action Committee:

Made up of county-wide representatives from the municipalities, economic development organizations, representing member businesses, and Central Washington University. This committee of “doers” will work on the successful implementation of the economic development strategic plan.

Advisory Groups:

**Businesses | Education | Government | Nonprofit
Other**

As needed, the KCEDP, Staff and/or COG may identify external businesses and/or organizations who can bring additional value, resources, and expertise to the partnership. These external support partners will work with the KCEDP, COG, and the EDD, as needed.

Kittitas County Economic Development

Partnership Framework for Collaboration and Transformative Economic Development

Vision Statement

Kittitas County will become a model hub for transformative economic development.

Mission Statement

The KCEDP is committed to fostering a vibrant, resilient, and diversified economy by uniting public and private partners across the county. We work together to implement a strategic plan that honors our unique character, strengthens local communities, and creates a sustainable economy for all residents of Kittitas County.

Values:

The KCEDP is guided by the following goals identified in the Kittitas County Economic Development Strategic Plan:

Collaboration: Unite upper and lower County government and organizations in shared goals and actions that benefit the County as a whole.

Economic Resilience: Provide residents with tools and resources to access jobs and opportunities in the area, including entrepreneurship.

Balanced Growth: Direct and manage the County's growth to build a dynamic community that remains an attractive and affordable place to live.

Community Investment: Develop the County's infrastructure to meet its current and future needs and position it to amplify the advantage of its central location.

Preservation: Preserve the legacy of the County, valuing its assets and resources to turn them into opportunities for future generations.

Kittitas County Economic Development Timeline

2021-2022

Kittitas County engages in the development of the KCED Strategic Plan with TIP Strategies. This included extensive community engagement and all the municipalities.

2023

- City of Ellensburg creates and hires Economic Development Manager.
- Small team of County, Ellensburg, CWU travels to UNI to meet with Institute for Decision Making. (IDM)
- Held first county-wide economic development summit meeting.

2025

- Implementation Task Force w/IDM develops the Implementation Matrix.
- Begin to layout the structural framework for the governance of the implementation work.
- Develop Economic Development Partnership (doers)
- Hire Executive Director to oversee implementation.

Feb. 2023

Kittitas County Economic Development Strategic Plan completed.

2023-2024

- Small team of County, Ellensburg, CWU begin the 'road show' to other municipalities to secure commitment to continue to work together on implementation of the strategic plan. This became known as the Letter of Mutual Partnership.
- CWU engages the IDM team to facilitate development implementation plan.
- Restructured EDOs: Dissolved EBDA to make room for county-wide resource.

**Timeline starting point is from the development of the Kittitas County Economic Development Strategic Plan to currently.*