



March 12, 2025

Ryan Lyyski, Public Works & Utilities Director  
Derek Mayo, City Engineer  
Josh Mattson, Asst. City Engineer

# City Streets Transportation



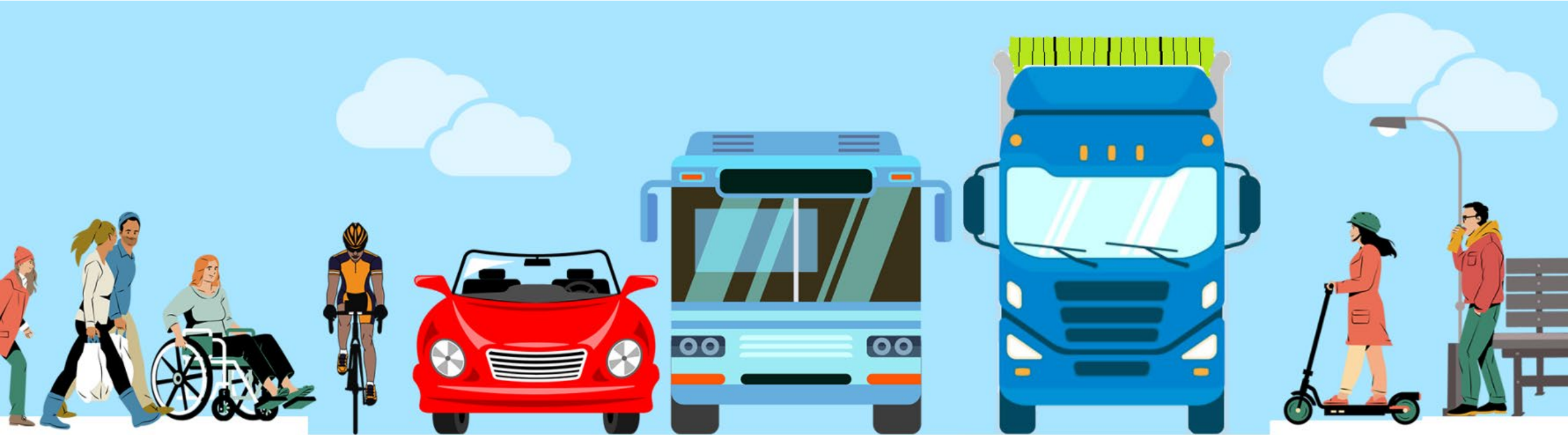
# Welcome

Agenda – Brief overview of the City street transportation system, including:

- Policy & Use
- Planning
- Prioritization
- Maintenance
- Funding
- Recent improvements and upcoming projects.



# Our Transportation System



# What is our Complete Streets Policy?



- **ECC 4.05.010**
- **“... The city shall, to the maximum extent practical, scope, plan, design, construct, operate and maintain appropriate facilities for the safe accommodation of pedestrians, bicyclists, transit users, motorists, emergency responders, freight, and users of all ages and abilities in all new construction, retrofit or reconstruction projects.**





# Ellensburg's Comprehensive Plan Goals



## Comprehensive Plan



Adopted by City Council  
Amended by City Council  
Amended by City Council  
Amended by City Council  
Amended by City Council  
Amended by City Council

Ordinance Number: 4785  
Ordinance Number: 4811  
Ordinance Number: 4838  
Ordinance Number: 4869  
Ordinance Number: 4882  
Ordinance Number: 4926

December 18, 2017  
November 5, 2018  
December 2, 2019  
January 19, 2021  
December 20, 2021  
December 23, 2023



- **Goal T-1, Policy C: Prioritize safety improvement as part of every project , incl. maintenance tasks when possible**
- **Goal T-2, Policy B: Street grid Interval of:**
  - **1/2 Mile for Arterial Streets**
  - **Maintain a 1/4 connection for circulation**
  - **Max. 600' pedestrian connections**
- **Goal T-2, Policy D:**
  - **LOS B for Local Access streets**
  - **LOS C for Arterials and Collectors**
  - **LOS D for I-90 Interchanges**

# Comp. Plan Goals (cont.)

- **Goal T-3: Fill Gaps in the system to accommodate safe, enjoyable, and energy efficient travel by all modes of transportation**
- **Adopted Roadway Functional Classification Map**
  - **Map is consistent with Kittitas County and WSDOT street classification maps**



Figure 13. Roadway Functional Classifications



**\*\*Figure 13 (above) depicts the general location and connections of future roadways. The exact locations of future roadways will be determined based on topography, environmental conditions, and future development needs.**



# Comp. Plan Projects

- **20-Year Project List - Tier 1:**

- Higher Priority List from 2017
- 43 Projects and a Transit Master Plan.
- 22 Projects and the Transit Plan have been completed.
- 1 Project has been partially completed.
- University Way and Wildcat Way Signal Modification & Widening
- Helena Ave Sidewalk Addition and Bike Lane Installation



University Way



Helena Ave

# Comp. Plan Projects (cont.)

- **20-Year Project List - Tier 2:**
  - Lower Priority List from 2017
  - 24 Projects Listed
  - 12 Projects are at least partially completed or are underway.
  - Brick Road Sidewalks
  - Pfenning Road Sidewalks



Brick Rd



Pfenning Rd





# Ellensburg's Active Transportation Plan (ATP)



**Vision:** The overall vision of the ATP is to make the community's transportation facilities more attractive and safer for all users. This will be achieved by developing projects that provide new or strengthened walking and biking connections to key destinations....



City of Ellensburg  
**Active Transportation Plan**

February 2020



# Ellensburg's ATP (cont.)

The adopted ATP includes a list of multi-modal planned projects. These projects were based on:

- Public Input
- Other Plans (CTC, City to Canyon, ect.)
- PTC Reconnection Study
- Bicycle Friendly Comm. Report Card
- Schools (ESD and CWU)
- Level of Stress Analysis
- Condition Assessment

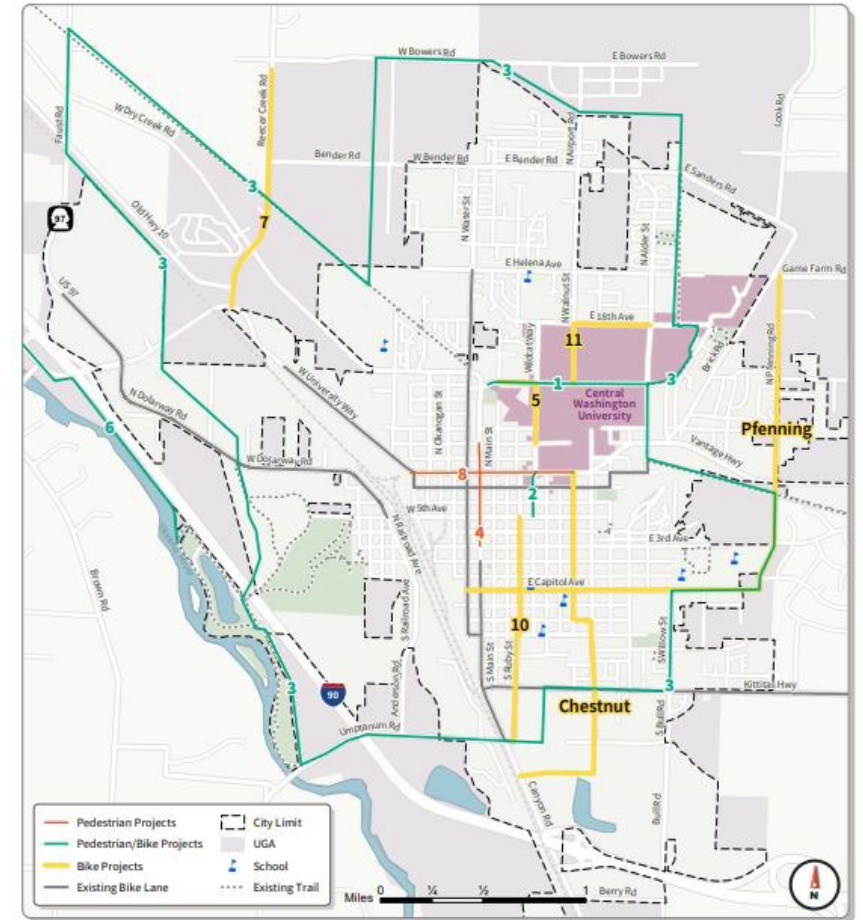


Figure - 13 Long Term Investment Project Ideas



# Active Transportation Plan

## Project List :

- 64 Projects in the 2019 Plan.
- 14 Projects have been completed.
- 16 Projects are underway or have been partially completed.
- Palouse to Cascades Reconnect Trail along Alder Street
- Pfenning Road Shared Use Pathway



Alder St



Pfenning Rd



# Ellensburg's Local Road Safety Plan



**Ellensburg's Road Safety Plan was completed in 2019, updated in 2020**

- **One of the first agencies in the state to complete**
- **Staff presented our Safety Plan at a WSDOT symposium in 2019.**
- **In depth safety analysis of our system based on accident history, severity, and traffic volumes.**
- **Includes a prioritized project ranking based on Safety Score.**



# **Ellensburg's Local Road Safety Plan (cont.)**



Open House - LRSP

**The City of Ellensburg received a federal grant award to complete an updated and expanded Local Road Safety Plan (LRSP), through the Safe Streets For All (SS4A) grant program.**

- **This new plan is for all streets in the City and UGA**
- **Includes Ellensburg Schools, CWU, Transit, Kittitas County, and WSDOT as stakeholders.**
- **Updated LRSP will make City eligible for SS4A implementation funds**
- **An expanded safety plan will better position the City for other grants**



# Ellensburg's Approved 'Truck Route'

- **Truck Route is adopted and included in the City's Comp. Plan and PW Development Standards**
- **Freight movement is essential to our community and is a critical consideration in project selection.**



**Figure 18. Existing Truck Routes**





# Ellensburg's ADA Transition Plan for the ROW

- Adopted by Council in 2019
- Includes a full assessment, evaluation, and rating of every ADA ramp and sidewalk in the City.
- Prioritized list of sidewalk improvements



# ADA Transition Plan (cont.) – Prioritized List

**\$5,000 for  
Curb  
Ramp  
Repair in  
2025**

City of Ellensburg

ADA Self-Evaluation and Transition Plan Assistance

Total Prioritization Scores with Planning Level Unit Costs applied

June 13, 2019

PERTEET

CURB RAMPS											
GIS ID	Street	Cross Street	Corner	Direction	Unit Cost Condition	Planning Level Improvement Cost	ADR	BCR	Total Prioritization Score	Planned Improvement Date	Date Improvement Completed
1024	3rd	ruby	NW	SB	1	\$4,000	12.90	501	6463		
910	tacoma	anderson	NE	NA	1	\$4,000	12.85	500	6425		
908	tacoma	anderson	NW	SB	1	\$4,000	12.85	500	6425		
1131	2nd	pearl	NE	NB	1	\$4,000	12.85	500	6425		
1138	1st	pine			1	\$4,000	12.80	500	6400	2023	
1008	1st	sprague	NW	SB	1	\$4,000	12.80	500	6400	2017	2017
911	tacoma	anderson	SE	NA	1	\$4,000	12.70	500	6350		
909	tacoma	anderson	SW	NA	1	\$4,000	12.70	500	6350		
923	4th	sprague	NE	NB	1	\$4,000	12.70	500	6350		
924	4th	sprague	SW	EB	1	\$4,000	12.70	500	6350		
891	2nd	sampson	NW	EB	1	\$4,000	12.70	500	6350	2021	2021
1013	2nd	sprague	NW	SB	1	\$4,000	12.70	500	6350	2023	
873	4th	anderson	NW	SB	1	\$4,000	12.60	500	6300		
879	3rd	anderson	SW	NB	1	\$4,000	12.55	500	6275	2020	2020
1018	2nd	ruby	SE	NB	1	\$4,000	12.55	500	6275	2018	2018
894	1st	anderson	NW	EB	1	\$4,000	12.50	500	6250	2017	2017
1012	1st	ruby	NE	SB	1	\$4,000	12.50	500	6250	2017	2017
996	wa ave	sprague	SW	NB	1	\$4,000	12.45	500	6225		
892	2nd	sampson	NE	SB	1	\$4,000	12.40	500	6200	2021	2021
903	wa ave	ruby	NE	SB	1	\$4,000	12.30	500	6150		





# **ADA Transition Plan (cont.) - Improvement Selection/Completion**



- **Annual Sidewalk Repair Program:** Completes ADA improvements based off prioritized list and specific citizen requests.
  - **\$140,000 Annual Budget**
- **Capital Projects** are required to include ADA compliance upgrades to all adjacent ADA ramps.
  - **Example: All Asphalt Overlays** include adjacent ADA Ramp upgrades





# Sidewalk Repair – Citizen Request Process

- **Sidewalk Repairs:**
  - **Citizen Requests:**
    - City's Website, or
    - Calling the Public Works Department at 509-962-7230
  - Requests are ranked by severity.
  - Projects are completed by replacing or repairing the sidewalk.
  - Non-Residential sidewalks are maintained by the adjacent property owner.



The screenshot displays the City of Ellensburg website's 'Request Tracker Forms' page. The header includes the city's name, address (501 N Anderson Street), phone number (509-962-7204), and social media links. A navigation menu lists 'Residents', 'Utilities', 'Government', 'In Our Community', and 'Business & Projects'. The left sidebar contains links to 'About Ellensburg', 'City Council Meetings & Agendas', 'Meet Your City Council', 'City Code', 'City Department Listing', 'City Staff Directory', and 'ADA Information'. The main content area is titled 'Streets / Sidewalks' and contains a form for reporting issues. The form has three main sections: 'Brief Description' (with a large text area), 'Problem Location' (with fields for Street Number and Name, Address Line 2, City, State, and Zip Code), and 'Your Information' (with fields for Name, Street Number and Name, Address Line 2, City, State, Zip Code, Phone Number, Fax Number, Email Address, and Preferred Contact Method). Red asterisks indicate required fields.

\* Indicates required fields.

Online Street/Sidewalk Complaint Form

# Corresponding Utility Plans/Projects

AGENCY REVIEW DRAFT: JANUARY 2021

City of Ellensburg

WATER SYSTEM PLAN



PREPARED BY RH2 ENGINEERING



- As apart of any Street Improvement project, staff evaluate and complete necessary utility repairs/upgrades as apart of that project.
- The reverse is also true. Some planned utility projects (water, sewer, storm, natural gas, electric and telecom) are expanded to include transportation improvements.
- Merging projects saves costs and decreases impacts to the public with multiple projects on the same section of street(s).

# Prior to Construction, Projects Need:

	Funding (S/P)	PROJECT	EXPENDITURES BY YEAR (thousands)			
			2023*	2024	2025	2026
1	S/P	Bridge Inspections	5	5	5	5
2	S/P	Engineering Transfer	15	15	15	15
3	S/P	Signal Optimization	25	25	25	25
4	S/P	Alley Reconstruction (Semi-Annual)	80	0	85	0
5	S	University Way and Reecer Creek Road Signalization	25	0	0	0
6	S	5th Ave. and Railroad Ave. Traffic Signal Installation	124	0	0	0
7	S	University Way Gateway - Nanum Street to Red Horse Diner	2,500	0	0	0
8	S	Downtown Slurry Seal	129	0	0	0
9	S	Main St. Overlay - 3rd Ave to University Way	592	0	0	0
10	S	Wildcat Way Overlay (University Way to 18th Ave)	646	0	0	0
11	S	Ruby St Skim Patch	220	0	0	0
12	S	Pfenning Road Shared Use Pathway	50	526	0	0
13	S/P	Helena Ave Imp (Water St to 3,200' west, Cora Connection, portion in KC jurisdic	150	300	0	0
14	S	Brick Rd Improvements	191	1,485	0	0
15	S/P	Mountain View Ave and Bull Rd/Willow St Intersection Enhancements	75	0	750	0
16	S/P	University Way Gateway II - Vista Rd to east City Limits	510	515	5,125	0
17	S	Pfenning Rd Sidewalk - 240' North of Vantage Hwy to Radio Rd	272	1,867	0	0
18	S/P	Alder St Sidewalk - One Side - Capitol Ave to 4th Ave	0	75	0	80
19	P	Large Scale Wayfinding Implementation Project	0	133	0	0
20	S/P	Capitol Ave Sidewalk Replacement - Main St. to Sampson St.	0	100	0	110
21	P	Anderson/Umptanum/Railroad Ave. Road Widening/Overlay (Joint w/ County)	0	500	550	6,260
22	P	Recon. Trail and Sidewalk Extension - PTC to Bender and Hannah to Whiskey Cr	0	250	2,791	0
23	P	University Way Overlay - (BNSF To Whiskey Creek)	0	540	0	0
24	P	Water St. Overlay - University Way to Manitoba, Manitoba from Water to Main	0	0	1,416	0
25	P	1st Ave Sidewalk Improvements - Ruhr St. to Sampson St. - North Side	0	0	234	0

Six Year  
Transportation Improvement Plan



- To be included on the City's 6 Year Transportation Improvement Plan (TIP)
  - Updated annually in June, with additional updates as grant funding is secured.
- Included in City's Council approved Budget
  - Budgets are completed and approved every two years
  - Supplemental budget adjustments can be completed to add projects as needed with Council approval



# Resources Used to Determine Projects included in our TIP and Budget



[This Photo](#) by Unknown Author is licensed under [CC BY-NC-ND](#)

- Comprehensive Plan
- Active Transportation Plan
- Road Safety Plan
- Approved Truck Route
- ADA Transition Plan
- Corresponding Utility Plans
- Transit Plan/Routes
- School District Walk Route Maps
- Traffic Impact Fee Project List
- Development Impacts/ Patterns
- Requests from Public



# Traffic Impact Fees – Eligible Project Lists



## Traffic Impact Fee Rate Study Update

Prepared for  
City of Ellensburg

July 21, 2021

TC21-0016

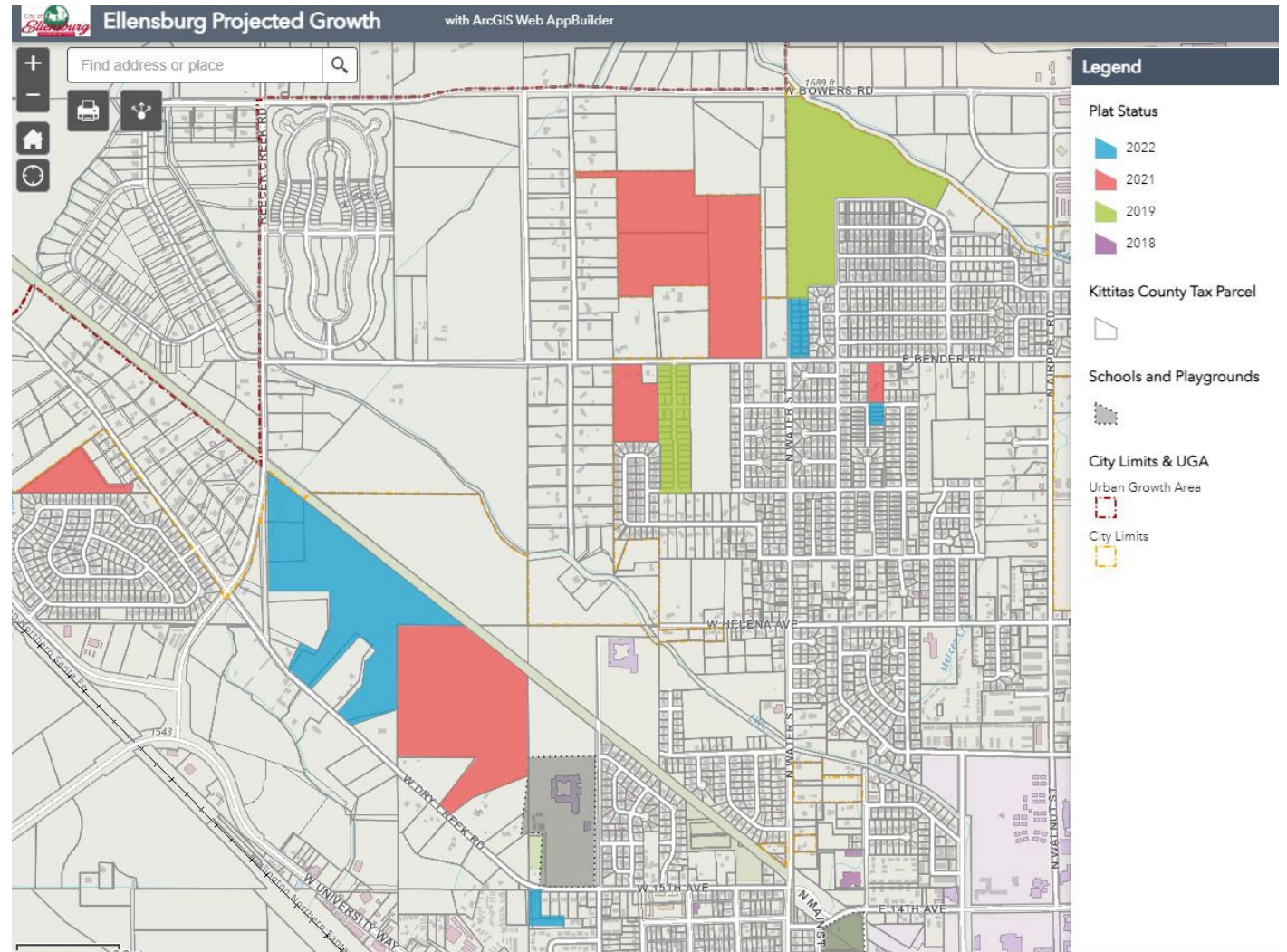
FEHR PEERS

- **Traffic Impact Fees (TIF's) were adopted by Council in 2009.**
- **Development pays TIF's at time of building permit issuance for their respective PM Peak hour vehicle trips generated.**
- **These TIF funds can only be used for approved capacity or active transportation improvement projects included in the City's Council approved TIP and TIF Project List.**



## Development Impacts / Changes to Traffic Patterns

- **Staff closely monitor development and development patterns to ensure their compliance with our LOS requirements and other adopted standards.**





# Development Traffic Impact Analysis (TIA)

## Transportation Impact Analysis Guidelines

Prepared for:  
City of Ellensburg

February 18, 2022

TC21-0033

FEHR  PEERS

- **Guidelines were created in 2022 to further outline when proposed developments are to complete a Traffic Impact Analysis and what is required to be evaluated:**
  - **Projects generating 10 peak hour trips is required to complete a trip distribution report/analysis**
  - **The guidelines also describe the methodology to determine the study area of the required TIA's completed by the Developer's Licensed Engineer**



# Development Traffic Impact Analysis (TIA) (cont.)

Table 1. Level of Service Definitions

Level of Service	Description	Signalized Intersection Delay (seconds/vehicle)	Unsignalized Intersection Delay (seconds/vehicle)
A	Free-flowing Conditions	$\leq 10$	0-10
B	Stable Flow (slight delays)	>10-20	>10-15
C	Stable Flow (acceptable delays)	>20-35	>15-25
D	Approaching Unstable Flow (tolerable delay)	>35-55	>25-35
E	Unstable Flow (intolerable delay)	>55-80	>35-50
F	Forced Flow (congested and queues fail to clear)	>80	>50

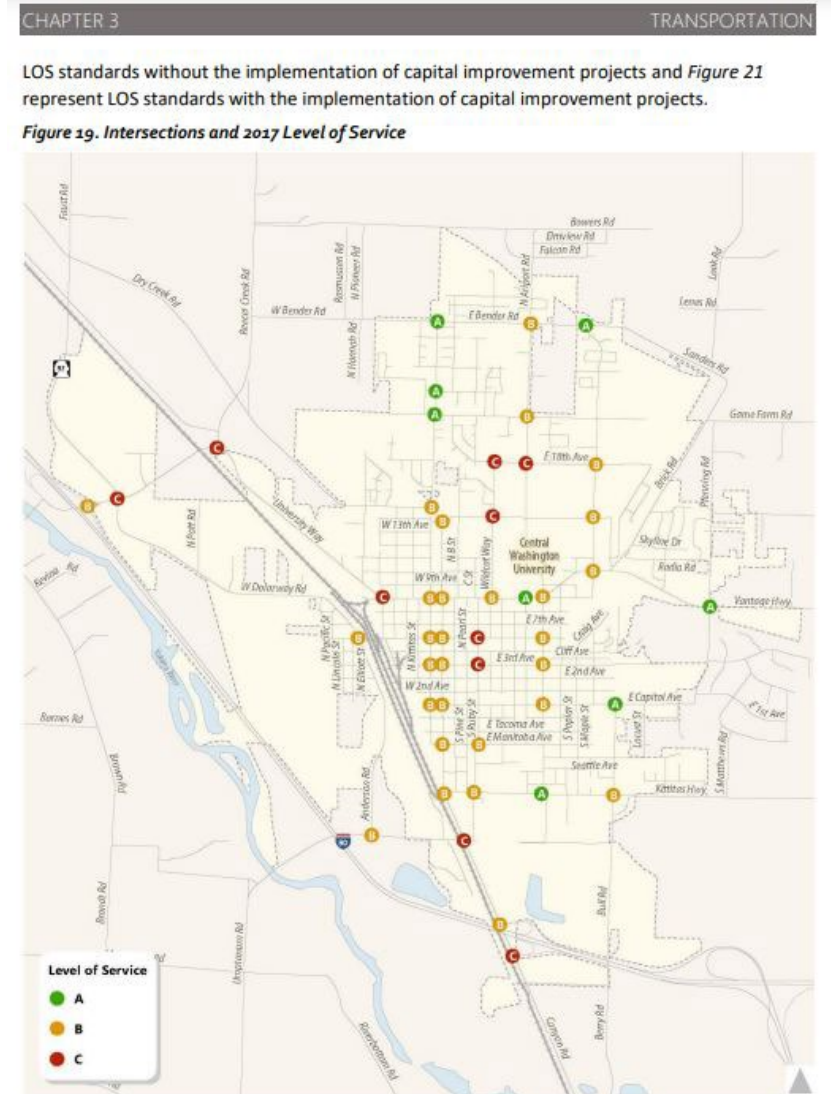
Source: Highway Capacity Manual (HCM) 6<sup>th</sup> Edition



- TIA's evaluate LOS for impacted intersections and streets. They also include a safety analysis.
- These are used to verify the development impacts to not exceed our adopted levels:
  - LOS B for Local Access Streets, LOS C for Arterial and Collectors, and D for Interchanges.
- These TIA's also provide recommended mitigation if necessary or required.

# Development Traffic Impact Analysis (TIA) (cont.)

- Staff closely monitor LOS from our Comp. Plans Transportation analysis and those completed be each development to ensure our standards are met and to help prioritize needed capacity improvement projects.





# Citizen Input and Feedback



**Staff and Council are always interested in citizen comments!**

- **Community Outreach during Planning Process**
- **Open Houses**
- **Surveys**
- **Contact PW&U Staff**
- **Citizen Comments at Hearings for TIP and Budget Adoptions**



# City Street Maintenance Program

- City's street overlay program and preservation program budget, \$1,972,360 per year.
- Overlay Main Arterials every ten years.
- Overlay Secondary Arterials & Primary Collectors every ten years and chip seal 5 years later.
- Chip Seal Local Access & Secondary Collectors every seven years.
- 2024 Accomplishments:
  - 10 miles of Chip Seal
  - 2.0 miles of Overlay

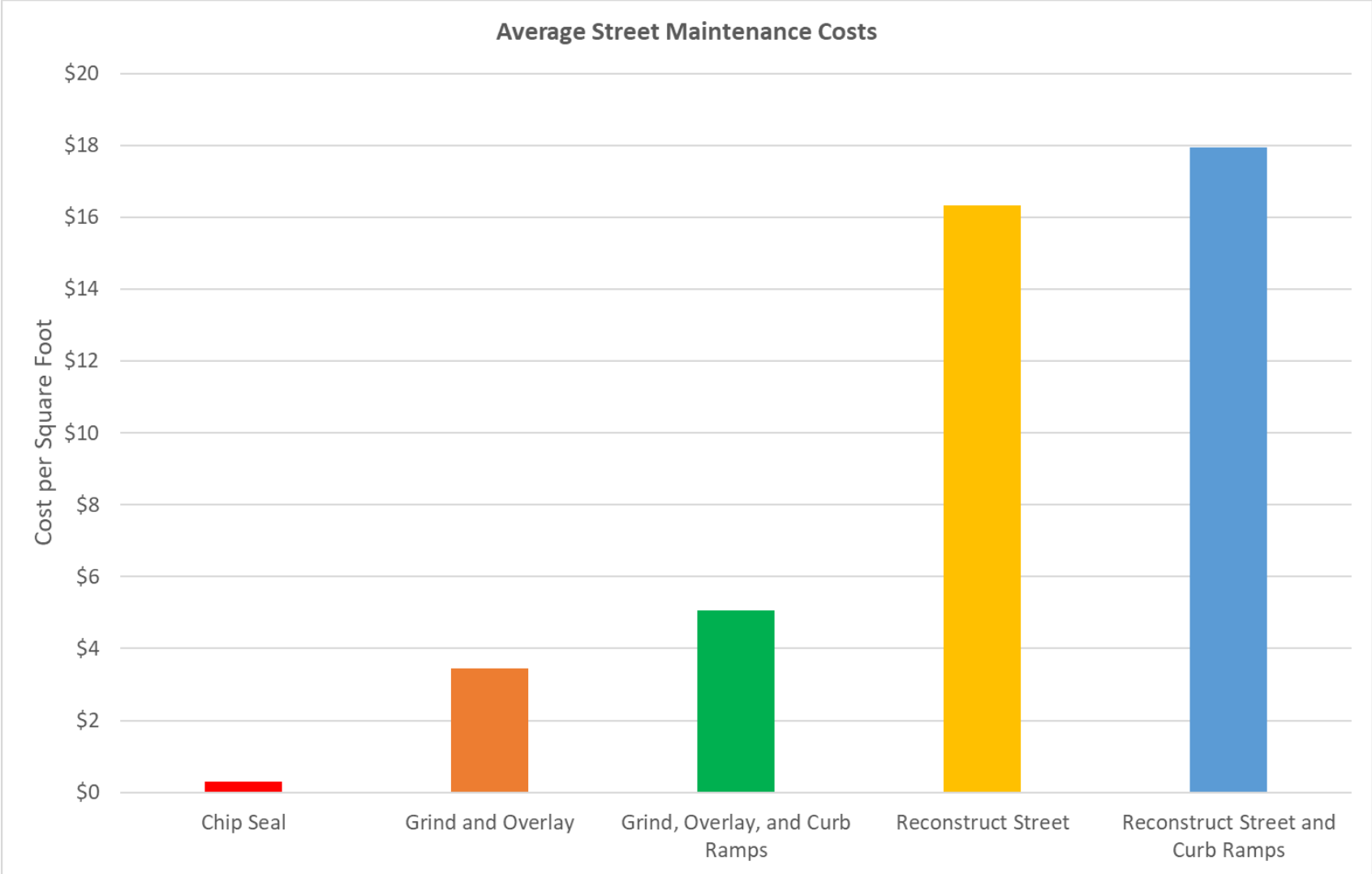


2nd Ave Chip Seal



Helena Ave Overlay

# Street Preservation vs Reconstruction

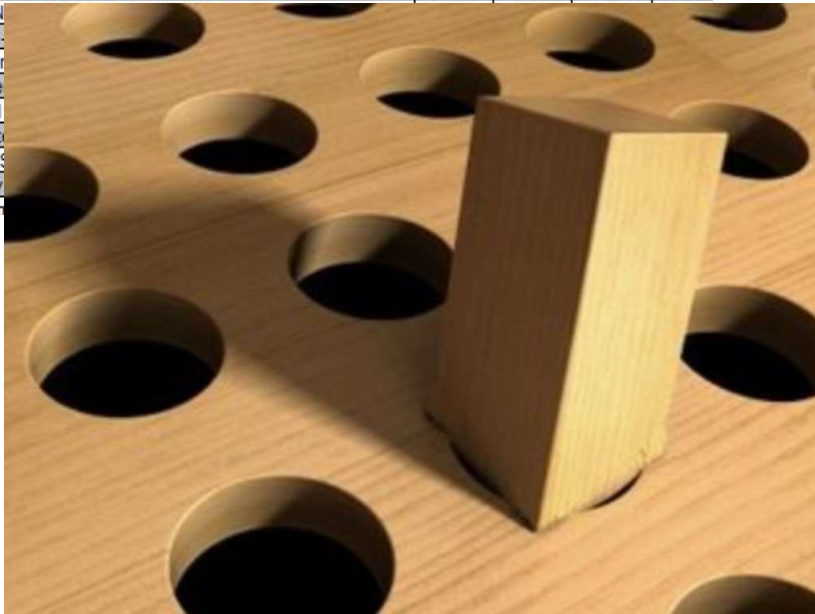




# Once Included in the TIP.....

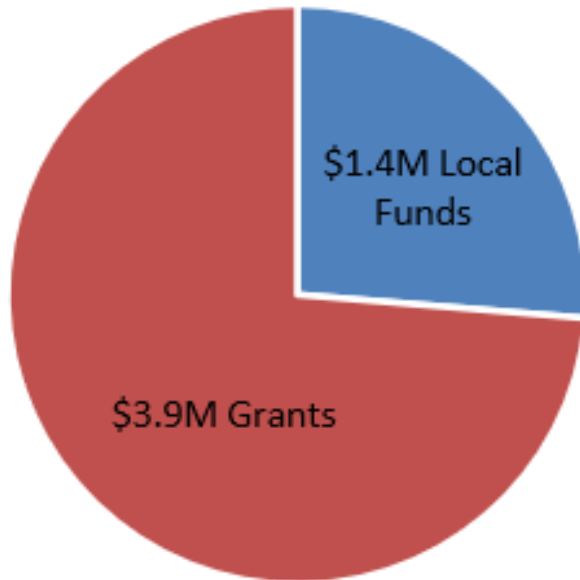
	Funding (S/P)	PROJECT	EXPENDITURES BY YEAR (thousands)			
			2023*	2024	2025	2026
1	S/P	Bridge Inspections	5	5	5	5
2	S/P	Engineering Transfer	15	15	15	15
3	S/P	Signal Optimization	25	25	25	25
4	S/P	Alley Reconstruction (Semi-Annual)	80	0	85	0
5	S	University Way and Reecer Creek Road Signalization	25	0	0	0
6	S	5th Ave. and Railroad Ave. Traffic Signal Installation	124	0	0	0
7	S	University Way Gateway - Nanum Street to Red Horse Diner	2,500	0	0	0
8	S	Downtown Slurry Seal	129	0	0	0
9	S	Main St. Overlay - 3rd Ave to University Way	592	0	0	0
10	S	Wildcat Way Overlay (University Way to 18th Ave)	646	0	0	0
11	S	Ruby St Skim Patch	220	0	0	0
12	S	Pfenning Road Shared Use Pathway	50	526	0	0
13	S/P	Helena Ave Imp (Water St to 3,200' west, Cora Connection, portion in KC jurisdiction)	150	300	0	0
14	S	Brick Rd Improvements	191	1,485	0	0
15	S/P	Mountain View Ave and Bull Rd/Willow St Intersection Enhancements	75	0	750	0
16	S/P	University Way Gateway II - Vista Rd to east City Limits	510	515	5,125	0
17	S	Pfenning Rd Sidewalk - 240' N				
18	S/P	Alder St Sidewalk - One Side -				
19	P	Large Scale Wayfinding Imple				
20	S/P	Capitol Ave Sidewalk Replace				
21	P	Anderson/Umptanum/Railroad				
22	P	Recon. Trail and Sidewalk Ext				
23	P	University Way Overlay - (BNS				
24	P	Water St. Overlay - University				
25	P	1st Ave Sidewalk Improvemen				

- Staff aggressively pursue any and all funding opportunities!!
- Determine best project fit from TIP projects for each specific grant criteria
- Potential Sources Include:
  - TIB (state gas tax)
  - Surface Trans. Block Grants (Fed.)
  - Safe Routes to School (Fed.)
  - Transportation Alt. Program (Fed.)
  - Dept. of Ecology Grants
  - Community Block Grants
  - And many others



# Heavily Dependent on Grant Funding

Funding for 2024 Transportation  
Capital Improvement Projects



- **2024 Transportation Improvement Projects were funded from a variety of sources, with about 75% of the funding from Grants.**
- **Ellensburg has typically fared extremely well in pursuit of grant funds.**
  - **Thanks to support of City Council in pursuing available funds!!!**
  - **Thanks to a dedicated staff who expend great efforts in securing these funds!!!**

# Example Project: Brick Road Improvements

Install new curb, gutter and sidewalk from Radio Rd to the McElroy Trail. Includes street lighting, buffer strips, and street trees.



Before



After

## Schedule:

- Designed in 2023
- Constructed in 2024

## Funding:

- Total Project Cost: \$1,635,000
- Surface Transportation Block Grant: \$1,284,000
- Local Match: \$351,000



**\* Project added to TIP in 2017 after receiving petition from adjacent residents and members of the community. Eventually receiving secured funding!!**



# Example Project: Pfenning Rd Sidewalk Ext

Install new curb, gutter and sidewalk from 240' north of antage Hwy to Radio Rd. Includes street lighting, buffer strips, and street trees.

## Schedule:

- Designed in 2023
- Constructed in 2024



Before



After

## Funding:

- Total Project Cost: \$1, 251,000 = TIB Grant: \$879,000 + Local Match: \$372,000





# Example Projects: Improving Transit Access



Gateway 1 Bus Stop



Alder Street Bus Stop at  
CWU Music Hall

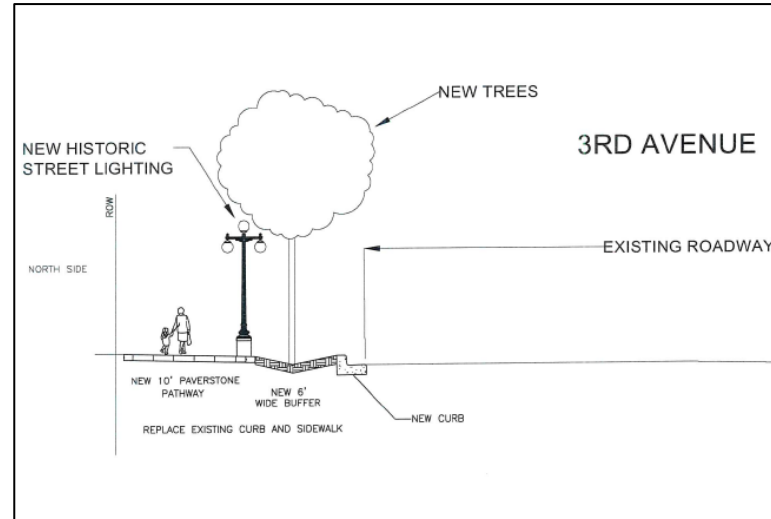


# Planned Project: 3<sup>rd</sup> Ave Paverstone Pathway

Replace dilapidated sidewalk with new paverstone pathway and install historic lighting on the north side of 3<sup>rd</sup> Ave from Water St to the Train Depot.



3<sup>rd</sup> Ave ca. 1917



Planned Improvements

## Schedule:

- Design in 2025
- Construct in 2026

## Funding:

- Total Project Cost: \$865,000
- Federal STBG-TA Grant: \$432,000
- Local Match: \$433,000



**\* Project will restore this sidewalk to its previous glory in the early 1900's and improve pedestrian access to transit, the CBD, and adjacent businesses.**



# Planned Project: Vantage Hwy Shared Use Pathway

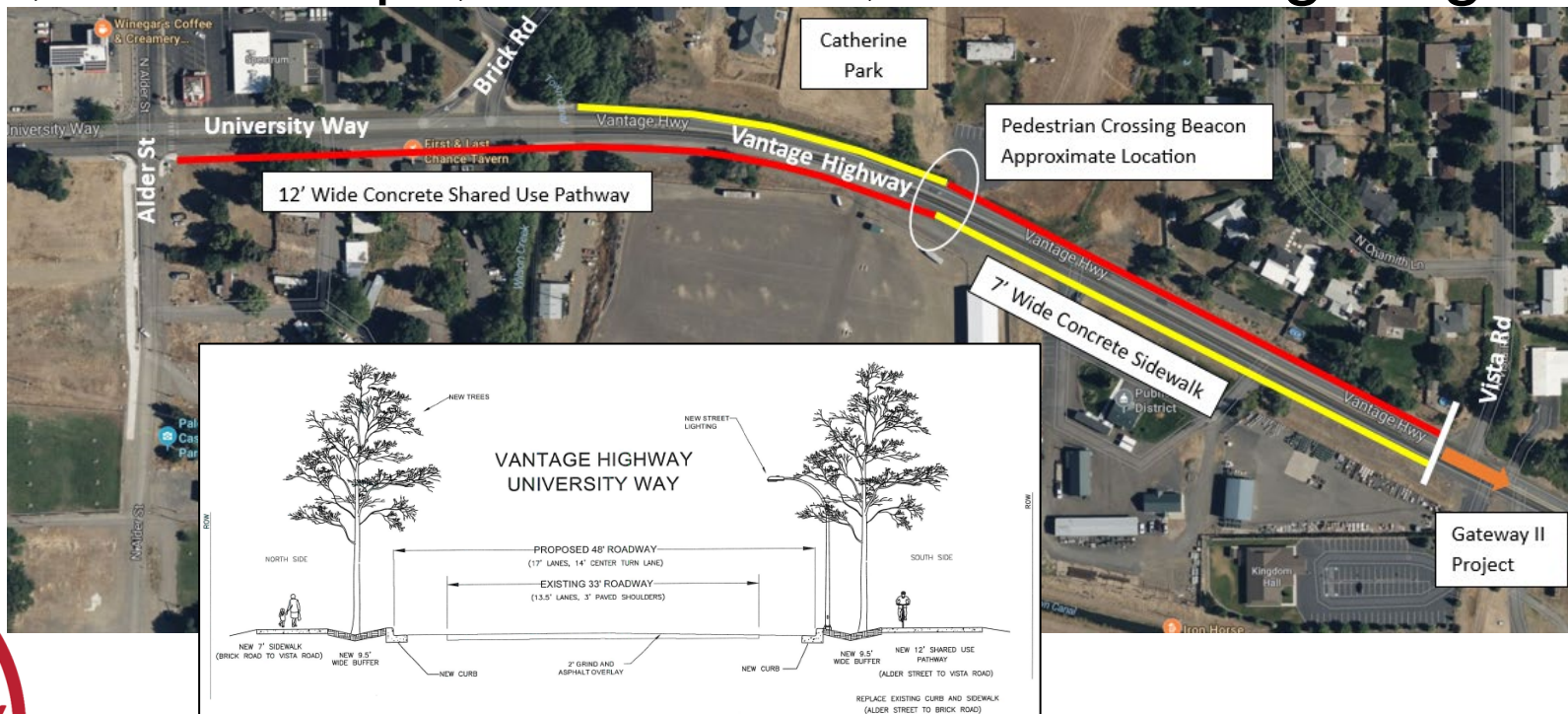
Install a 7' wide sidewalk and a 12' wide shared use pathway on Vantage Hwy and University Way with curb, gutter, buffer strips, street trees, and street lighting.

## Schedule:

- Design in 2025
- Construct in 2026

## Funding:

- Total Project Cost: \$2,318,000
- Federal Surface Transportation Block Grant: \$1,878,000
- Local Match: \$440,000



**\* Project will provide an active transportation connection to the Radio Hill neighborhood, the PTC Trail, and the Kittitas County Event Center.**



# Thank you!

*Conclusion of our City Street  
Transportation System overview,  
any questions?*

**Slides will be posted on the City website and link emailed to  
all registrants.**

