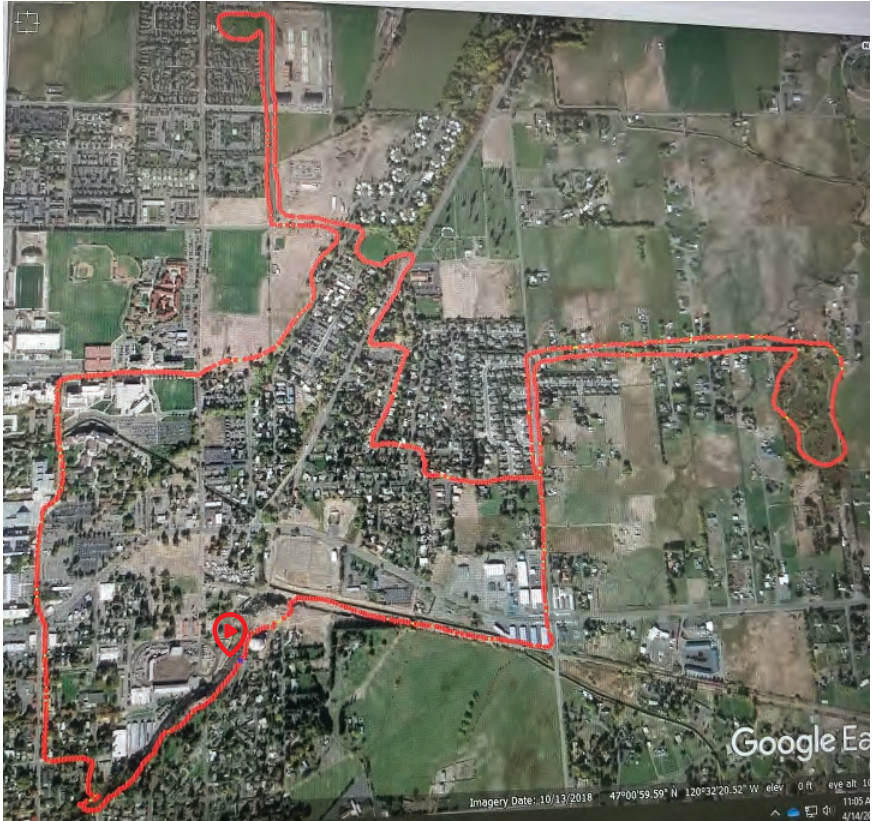


Ellensburg Parks and Recreation

Big Loop - 7.5 miles (+/-)



Visit Reed Park, North Alder Park, McElroy Park and Paul Rogers Park.



Start at Reed Park.

Follow the Sagebrush Trail to Chestnut Street.
Head north on Chestnut to Dean Nicholson Blvd.
East on Nicholson to the PTC reconnection.
Follow the PTC to North Alder Street Park.
Follow the loop around the park.
Head south on the PTC to McElroy.
Walk to the east side of the park and up
the trail to Brick Road; then follow Brick south.
Walk through the Radio Hill neighborhood to Pfenning.
Turn left on Pfenning to Judge Ronald Road, then right.
Take Judge Ronald to Paul Rogers and loop Paul Rogers.
Follow Judge Ronald back to Pfenning, Pfenning to the PTC.
PTC back up to Reed Park up the backside of the hill.

Because of the distance and route, this trail is best
for bicycles, pedestrians and dogs on leash.



For more info visit ci.ellensburg.wa.us/parks